

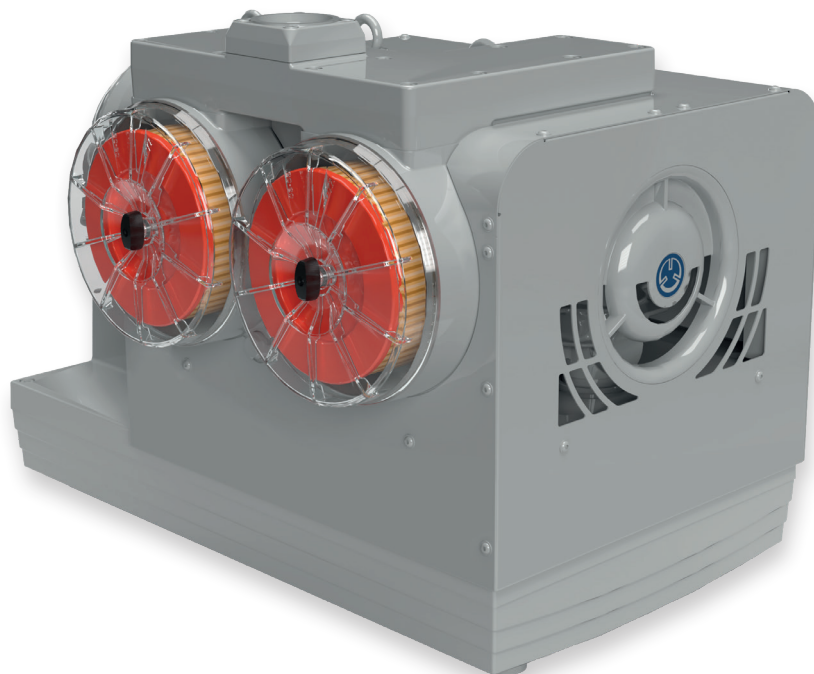
DATA SHEET

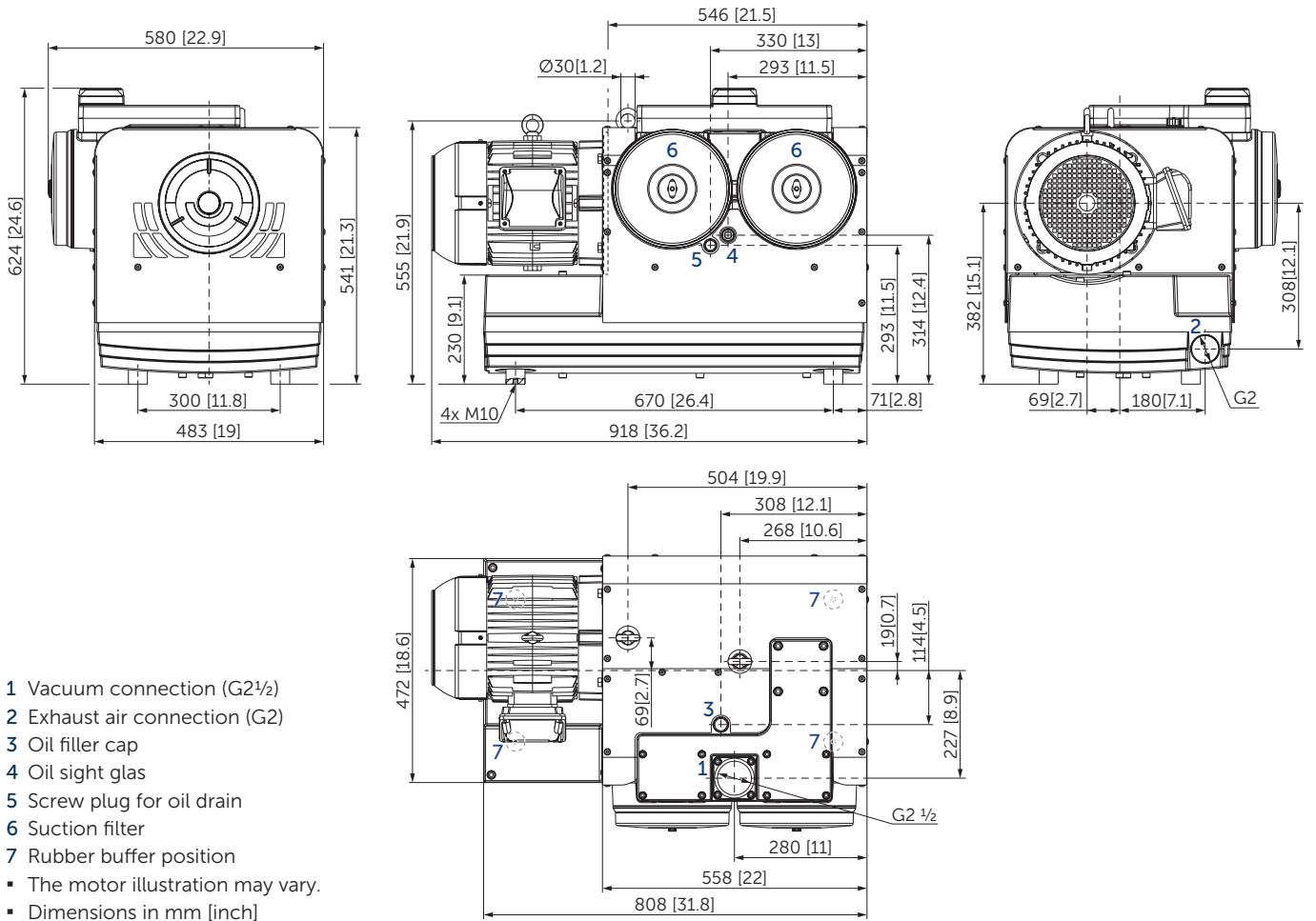
BCV 300

CLAW VACUUM PUMPS

dry and contact free compression
air-cooled

MAKE IT BECKER.



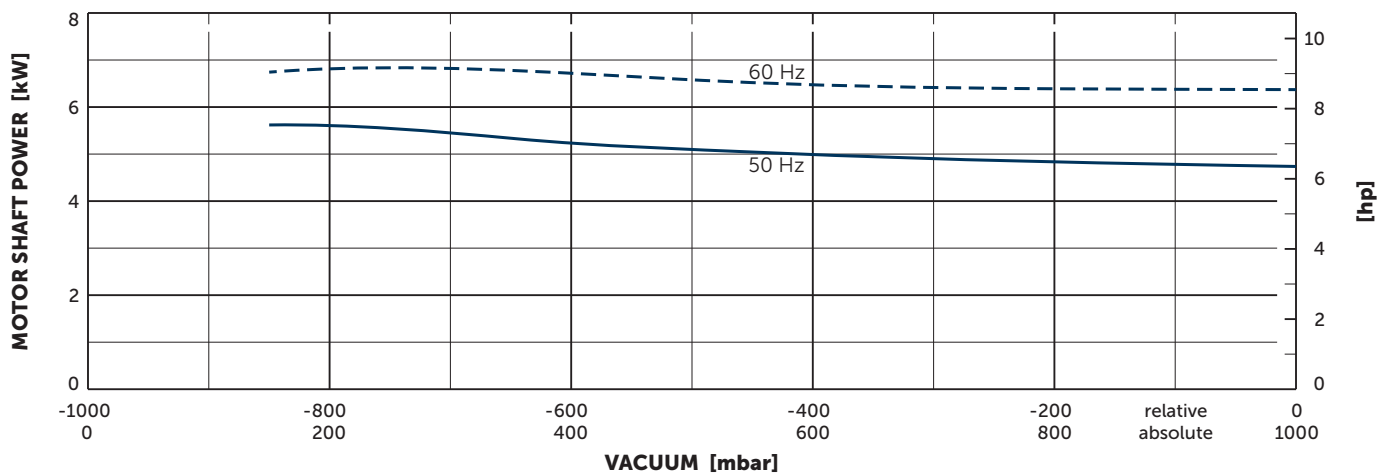
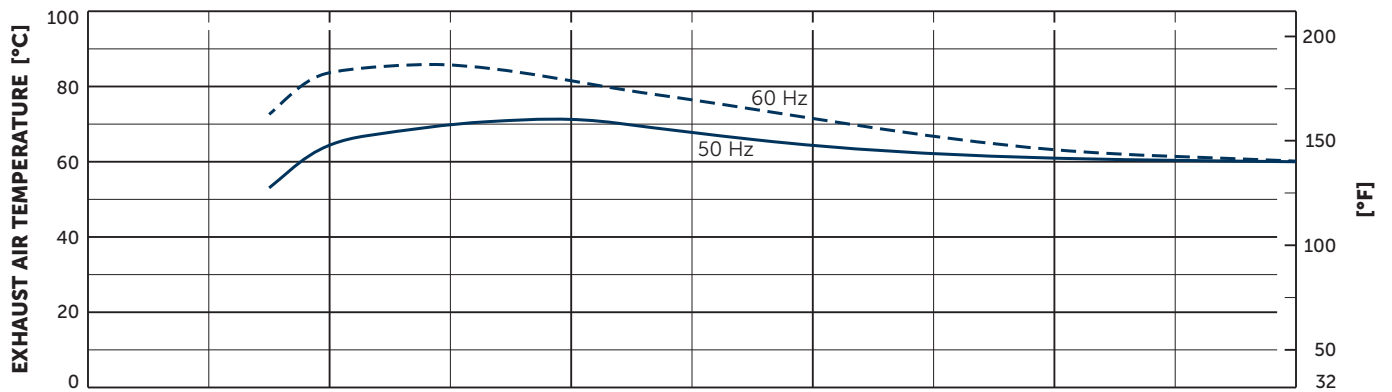
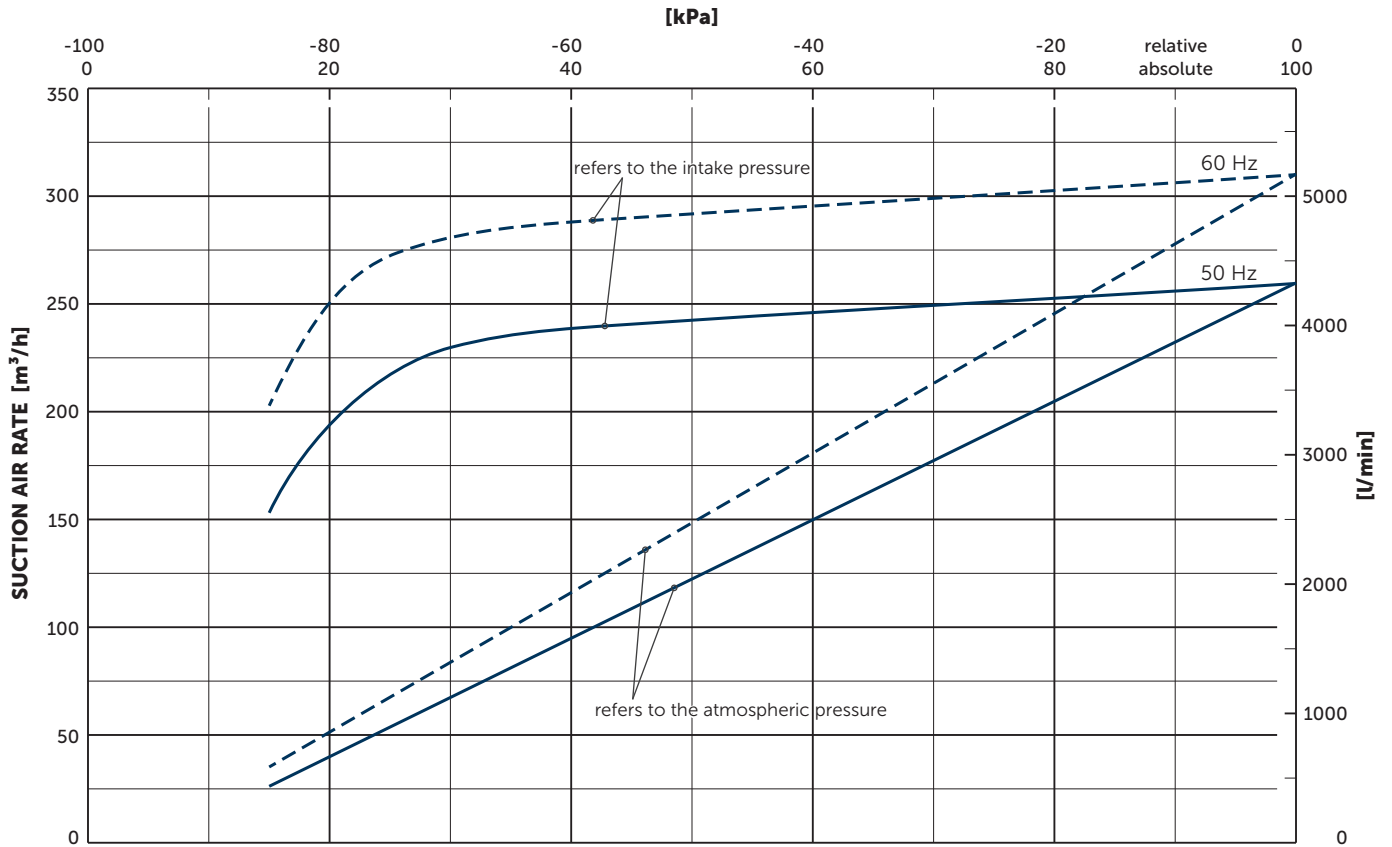


Nominal capacity		Vacuum absolute		Emission sound pressure level ¹⁾		Weight without motor
m ³ /h		mbar		dB(A)		kg
50 Hz	60 Hz	50 Hz	60 Hz	50 Hz	60 Hz	
275	325	150	150	69 (@400 mbar)	72 (@400 mbar)	257

¹⁾ According to DIN EN ISO 11203, accuracy class of measurement: class 2, extended measurement uncertainty: 3 dB
 1 m [39.4 inch] distance, at medium load, without integrated filtration, both connection sides piped

3~ Motors												
#	50 Hz				60 Hz				Version	Weight kg		
	kW	V	min ⁻¹	A	kW	V	min ⁻¹	A				
01		Δ380/Y660	IE3	2935	10.8/6.22						UL • CSA • CC IP55 • ISO F • PTC	66
	5.5	Δ400/Y690	IE3	2940	10.6/6.14	5.5	Δ460	IE3	3550	9.29		
		Δ415	IE3	2945	10.6							
					6.6	Δ400/Y690	IE1	3495	12.7/7.34			
						Δ460	IE1	3530	10.8			
02	7.5	Δ230/Y400	IE3	2930	24.5/14.1	7.5	YY230/Y460	IE3	3540	24.8/12.4	UL • CSA • CC IP55 • ISO F • PTC	71
						7.5	YY208		3525	26.2		
03	7.5	Δ290/Y500	IE3	2930	19.5/11.3	7.5	Δ332/Y575	IE3	3540	17.2/9.94	UL • CSA • CC IP55 • ISO F • PTC	72
04							Δ200/Y346	IE3	3535	23.7/13.7		74
	5.5	Δ200/Y346	IE3	2955	22.2/12.9	6.6	Δ220/Y380	IE3	3545	22.6/13.1	UL • CSA • CC IP55 • ISO F • PTC	
							Y400	IE3	3550	12.7		

- Type plate data on current consumption and rotation speed of the motors may vary. Tolerance -1.5/+2% in each case.



Reference data (atmosphere): 1000 mbar (100 kPa), 20°C (68°F)
 Tolerance: ±10%

+ VARIANTS

- **BCV 300 PRO** with corrosion protection
- **VARIAIR BCV 300** with frequency inverter¹⁾

VARIAIR
UNIT



VARIAIR BCV 300

¹⁾ See separate data sheet



MAKE IT BECKER.